

# PRODUCT INFORMATION PACKET



Model No: C4T17DC55A

Catalog No: E103014.00

..1/4HP..1800RPM.S56C.ODP.230/460V.3PH.60HZ.CONT.40C.1.35S.F..C FACE.....GENERAL  
PURPOSE.NOT.....

Open Drip Proof (ODP)



Regal and Leeson are trademarks of Regal Beloit Corporation or one of its affiliated companies.

©2018 Regal Beloit Corporation, All Rights Reserved. MC017097E





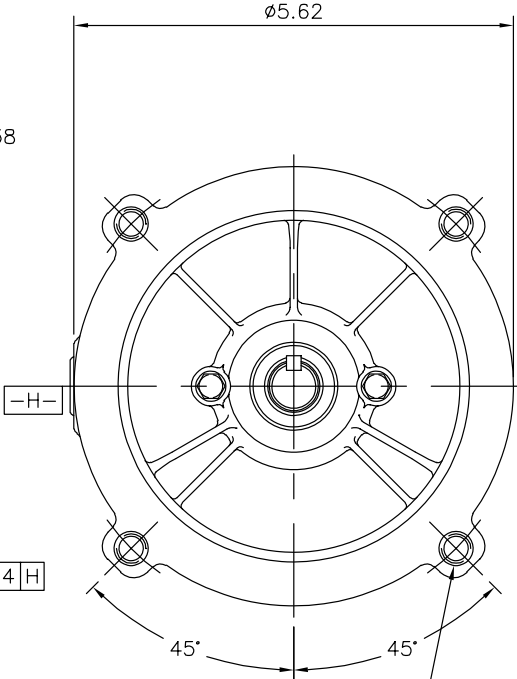
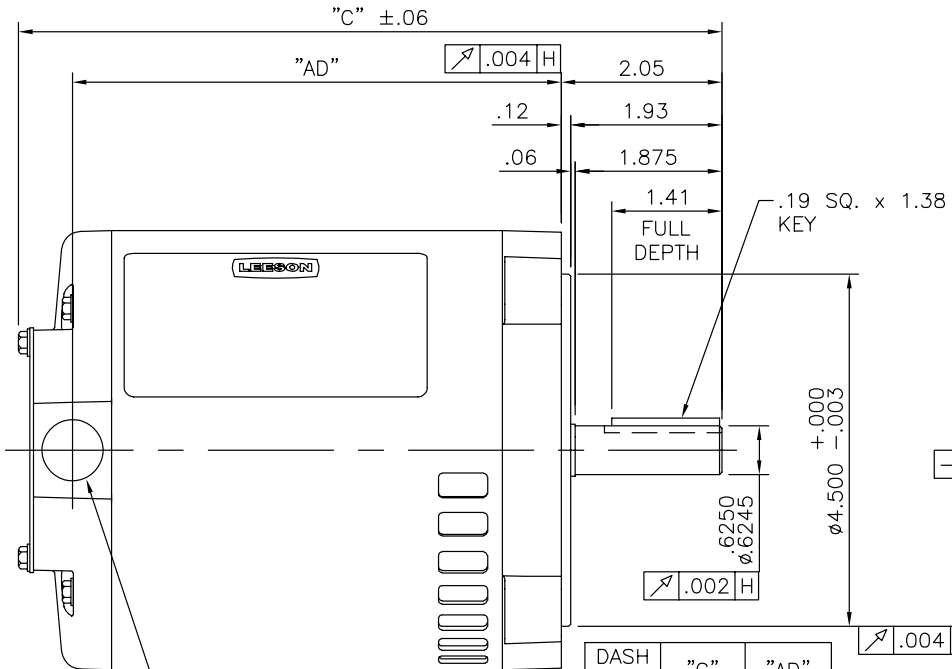
### Nameplate Specifications

|                            |                   |                        |                   |
|----------------------------|-------------------|------------------------|-------------------|
| Output HP                  | <b>0.25 Hp</b>    | Output KW              | <b>0.19 kW</b>    |
| Frequency                  | <b>60 Hz</b>      | Voltage                | <b>230/460 V</b>  |
| Current                    | <b>1.0/0.50 A</b> | Speed                  | <b>1725 rpm</b>   |
| Service Factor             | <b>1.35</b>       | Phase                  | <b>3</b>          |
| Efficiency                 | <b>69.5 %</b>     | Duty                   | <b>Continuous</b> |
| Insulation Class           | <b>B</b>          | Design Code            | <b>B</b>          |
| KVA Code                   | <b>M</b>          | Frame                  | <b>S56C</b>       |
| Enclosure                  | <b>Drip Proof</b> | Overload Protector     | <b>No</b>         |
| Ambient Temperature        | <b>40 °C</b>      | Drive End Bearing Size | <b>6203</b>       |
| Opp Drive End Bearing Size | <b>6203</b>       | UL                     | <b>Recognized</b> |
| CSA                        | <b>Y</b>          | CE                     | <b>Y</b>          |
| IP Code                    | <b>22</b>         |                        |                   |

### Technical Specifications

|                       |                                     |                       |                         |
|-----------------------|-------------------------------------|-----------------------|-------------------------|
| Electrical Type       | <b>Squirrel Cage Inverter Rated</b> | Starting Method       | <b>Line Or Inverter</b> |
| Poles                 | <b>4</b>                            | Rotation              | <b>Reversible</b>       |
| Mounting              | <b>Round</b>                        | Motor Orientation     | <b>HORIZONTAL</b>       |
| Drive End Bearing     | <b>BALL</b>                         | Opp Drive End Bearing | <b>BALL</b>             |
| Frame Material        | <b>Rolled Steel</b>                 | Shaft Type            | <b>NEMA 56</b>          |
| Overall Length        | <b>10.74 in</b>                     | Frame Length          | <b>6.75 in</b>          |
| Shaft Diameter        | <b>0.625 in</b>                     | Shaft Extension       | <b>1.88 in</b>          |
| Assembly/Box Mounting | <b>F1 ONLY</b>                      |                       |                         |
| Outline Drawing       | <b>A-031630-675</b>                 | Connection Diagram    | <b>A-EE7308-REGAL</b>   |

031630

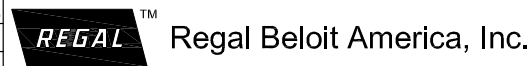


1/2-14 NPT  
CONDUIT HOLE  
(PLUGGED)

| DASH NO. | "C"   | "AD" |
|----------|-------|------|
| 450      | 8.49  | 5.75 |
| 475      | 8.74  | 6.00 |
| 500      | 8.99  | 6.25 |
| 525      | 9.24  | 6.50 |
| 550      | 9.49  | 6.75 |
| 575      | 9.74  | 7.00 |
| 600      | 9.99  | 7.25 |
| 625      | 10.24 | 7.50 |
| 650      | 10.49 | 7.75 |
| 675      | 10.74 | 8.00 |
| 700      | 10.99 | 8.25 |
| 750      | 11.49 | 8.75 |

3/8-16 UNC 2B TAP x .56 DEEP  
(4) REQ'D. ON A Ø5.875 B.C.

| NO.  | REVISION                | BY & DATE    | CHK | ANG   | ±1/2'  | TOLERANCES UNLESS SPECIFIED |                 | DRAWN PG 5/24/01 |                    |         |
|--|-------------------------|--------------|-----|-------|--------|-----------------------------|-----------------|------------------|--------------------|---------|
|  |                         |              |     |       |        | DEC.                        | INCHES          |                  |                    |         |
| 03   | ADDED DASH # 750        | PVR 01/14/15 | SM  | .XX   | ±.03   |                             |                 | CHK              |                    |         |
| 02   | ADDED DASH NO. 700      | KMM 4/19/05  | PG  | .XXX  | ±.005  |                             |                 | APPD             |                    |         |
| 01   | UPDATED CALLOUT OF GD&T | KMM 6/5/02   | PG  | .XXXX | ±.0005 |                             |                 | SCALE 1=2        |                    |         |
|  |                         |              |     |       |        |                             |                 | REF 031070       |                    |         |
|  |                         |              |     |       |        |                             |                 | MAT'L. 3 PHASE   |                    |         |
|  |                         |              |     |       |        |                             |                 | FMF 100048       |                    |         |
|  |                         |              |     |       |        |                             |                 | PREV             |                    |         |
| THIS DRAWING IN DESIGN AND DETAIL IS OUR PROPERTY AND MUST NOT BE USED EXCEPT IN CONNECTION WITH OUR WORK ALL RIGHTS OF DESIGN AND INVENTION ARE RESERVED THIS IS AN ELECTRONICALLY GENERATED DOCUMENT - DO NOT SCALE THIS PRINT |                         |              |     |       |        | RFP                         | CAD FILE 031630 | SIZE A           | DRAWING NO. 031630 | REV. 03 |
|  |                         |              |     |       |        | DIST                        |                 |                  |                    |         |



TITLE OUTLINE - S56C FRAME  
"C" FACE MOUNT - DRIP PROOF

EE7308

THREE PHASE  
DUAL VOLTAGE MOTOR



VIEW OF TERMINAL END

REF.  
WINDING DIAGRAM

T8Y, T2Y, T2BL, T4BX, T2EC, T2G  
T6BZ, T2B, T6BL, T4AV, T6B, T4B

OPTIONAL CORD  
CONNECTION

L1 — WHITE  
L2 — RED  
L3 — BLACK

| NO.  | REVISION                                       | BY & DATE      | CHK | ANG   | TOLERANCES<br>UNLESS SPECIFIED |        | FINISH                   | DRAWN RM 11/20/1990 |        |                    |           |        |
|--|--|----------------|-----|-------|--------------------------------|--------|--------------------------|---------------------|--------|--------------------|-----------|--------|
|  |  |                |     |       | DEC.                           | INCHES |                          |                     |        |                    |           |        |
| 5  | CHG TO REGAL LOGO                              | SL 09/10/2015  | AB  |       |                                |        |                          | CHK ML 11/21/1990   |        |                    |           |        |
| 4  | REVISED IEC NOTATIONS                          | MSG 11/15/2011 | CMN | .X    | ±.1                            |        |                          | APPD SAS 04/24/2003 |        |                    |           |        |
| 3  | ADDED IEC NOTATIONS... (U1), (V1) ETC. MU95194 | MSG 5/10/2010  | MJS | .XX   | ±.02                           |        | TITLE CONNECTION DIAGRAM | SCALE 1=1           |        |                    |           |        |
| 2  | ADDED THE OPTIONAL CORD CONNECTION MU46318     | RDH 04/24/2003 | DRS | .XXX  | ±.005                          |        | 3Ø - DUAL VOLTAGE MOTOR  | REF                 |        |                    |           |        |
| 1  | REDRAWN  | RM 11/20/1990  |     | .XXXX | ±.0005                         |        | MAT'L.                   | FMF                 |        |                    |           |        |
|  |  |                |     |       | ±7'30"                         |        |                          | PREV                |        |                    |           |        |
| THIS DRAWING IN DESIGN AND DETAIL IS OUR PROPERTY AND MUST NOT BE USED EXCEPT IN CONNECTION WITH OUR WORK ALL RIGHTS OF DESIGN AND INVENTION ARE RESERVED THIS IS AN ELECTRONICALLY GENERATED DOCUMENT - DO NOT SCALE THIS PRINT |  |                |     |       |                                |        | RFP                      | CAD FILE ee7308     | SIZE A | DRAWING NO. EE7308 | PAGE OF 5 | REV. 5 |
|  |  |                |     |       |                                |        | DIST WP                  |                     |        |                    |           |        |





CERTIFICATION DATA SHEET

1051 CHEYENNE AVE.  
 GRAFTON, WI 53024  
 PH. 262-377-8810

CATALOG #: E103014.00

CONN. DIAGRAM: A-EE7308-REGAL

MOUNTING: F1 ONLY

OUTLINE: A-031630-675

WINDING #: TE484124 3

TYPICAL MOTOR PERFORMANCE DATA

| HP      | KW        | SYNC. RPM | F.L. RPM  | FRAME | ENCLOSURE | KVA CODE | DESIGN |
|---------|-----------|-----------|-----------|-------|-----------|----------|--------|
| 1/4&1/4 | 0.1980.19 | 1800      | 1725&1425 | S56C  | DP        | M        | B      |

| PH | Hz    | VOLTS           | AMPS      | START TYPE       | DUTY       | INSL | S.F.      | AMB°C |
|----|-------|-----------------|-----------|------------------|------------|------|-----------|-------|
| 3  | 60/50 | 230/460&190/380 | 1/.5&1/.5 | LINE OR INVERTER | CONTINUOUS | B3   | 1.35/1.35 | 40    |

|                |      |               |      |               |      |                   |   |            |
|----------------|------|---------------|------|---------------|------|-------------------|---|------------|
| FULL LOAD EFF: | 69.5 | 3/4 LOAD EFF: | 64.6 | 1/2 LOAD EFF: | 56.6 | GTD. EFF          | 0 | ELEC. TYPE |
| FULL LOAD PF:  | 71.5 | 3/4 LOAD PF:  | 63   | 1/2 LOAD PF:  | 53.2 | SQ CAGE INV RATED |   |            |

| F.L. TORQUE | LOCKED ROTOR AMPS | L.R. TORQUE | B.D. TORQUE | F.L. RISE°C |
|-------------|-------------------|-------------|-------------|-------------|
| 12 OZ-FT    | 6.4 / 3.2         | 47.8 OZ-FT  | 52.1 OZ-FT  | 434 %       |
|             |                   |             |             | 15          |

| SOUND PRESSURE @ 3 FT. | SOUND POWER | ROTOR WK^2 | MAX. WK^2 | SAFE STALL TIME | STARTS / HOUR | APPROX. MOTOR WGT |
|------------------------|-------------|------------|-----------|-----------------|---------------|-------------------|
| 0 DBA                  | 10 DBA      | 0 LB-FT^2  | 0 LB-FT^2 | 0 SEC.          | 0             | 0 LBS.            |

\*\*\* SUPPLEMENTAL INFORMATION \*\*\*

| DE BRACKET TYPE | ODE BRACKET TYPE | MOUNT TYPE | ORIENTATION | SEVERE DUTY | HAZARDOUS LOCATION | DRIP COVER | SCREENS | PAINT          |
|-----------------|------------------|------------|-------------|-------------|--------------------|------------|---------|----------------|
| C-FACE          | STANDARD         | ROUND      | HORIZONTAL  | FALSE       | NONE               | FALSE      | NONE    | GREEN (POWDER) |

| BEARINGS DE ODE | GREASE      | SHAFT TYPE  | SPECIAL DE | SPECIAL ODE | SHAFT MATERIAL           | FRAME MATERIAL |
|-----------------|-------------|-------------|------------|-------------|--------------------------|----------------|
| BALL BALL       |             |             |            |             |                          |                |
| 6203            | MULTEMP SRL | STANDARD 56 | NONE       | NONE        | 1144 STRESSPROOF (C-223) | ROLLED STEEL   |

| THERMO-PROTECTORS |            |          |          | THERMISTORS | CONTROL | SPACE HEATERS |
|-------------------|------------|----------|----------|-------------|---------|---------------|
| THERMOSTATS       | PROTECTORS | WDG RTDS | BRG RTDS | NONE        | FALSE   | NONE          |
| NONE              | NOT        | NONE     | NONE     |             |         |               |

INVERTER TORQUE: CONSTANT 2:1

INV. HP SPEED RANGE: NONE

|          |      |
|----------|------|
| ENCODER: | NONE |
|          | NONE |
|          | NONE |
|          | PPR  |

|        |       |             |
|--------|-------|-------------|
| BRAKE: | NONE  | NONE        |
|        | P/N   | NONE        |
|        | NONE  | NONE        |
|        | FT-LB | NONE V NONE |
|        | NONE  | NONE        |
|        |       | Hz          |

\*  
 N  
 O  
 T  
 E  
 S

